

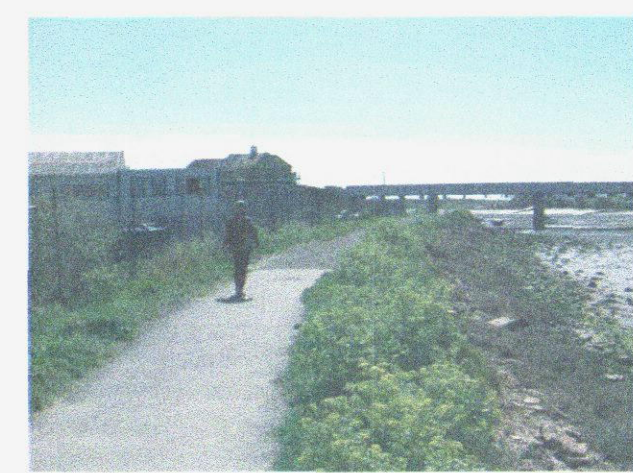
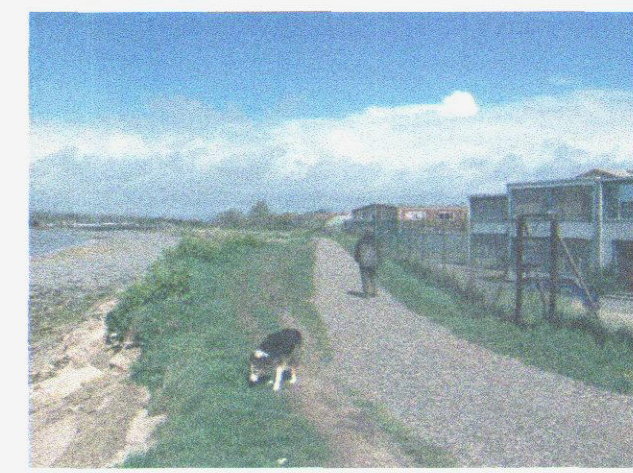
Proposed area of landscape enhancements for reptile translocation including :

- partial scrub removal
- construction of 3 No. Artificial reptile refuga/Hibernaculum
- new native scrub planting
- new areas of Tussock grassland
- on-going maintenance of grass areas and planting

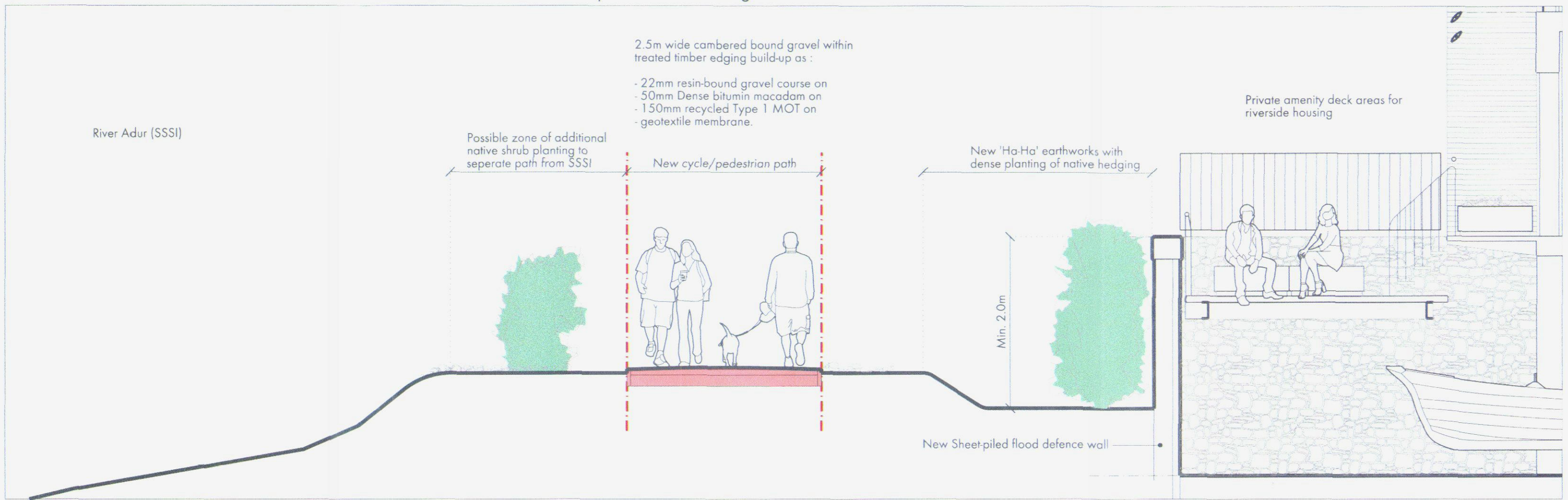
(See Ecology report for details. Subject to agreement with County ecologist)



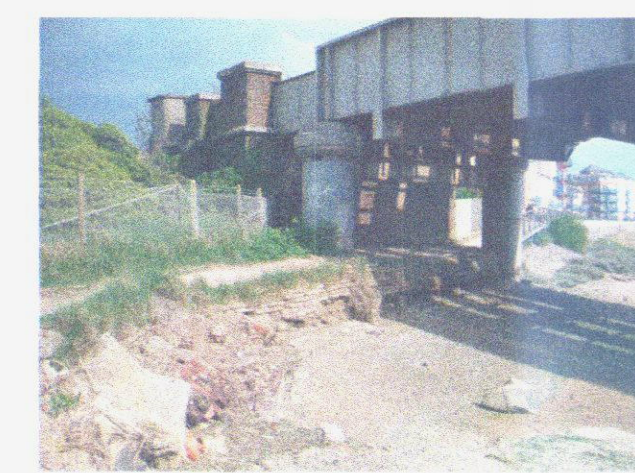
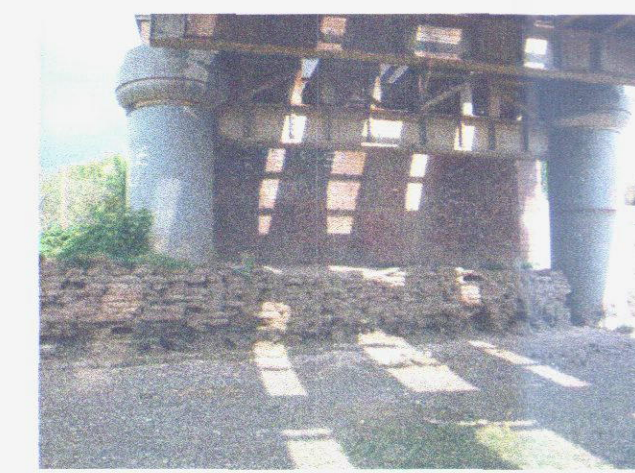
Examples of resin bound gravel



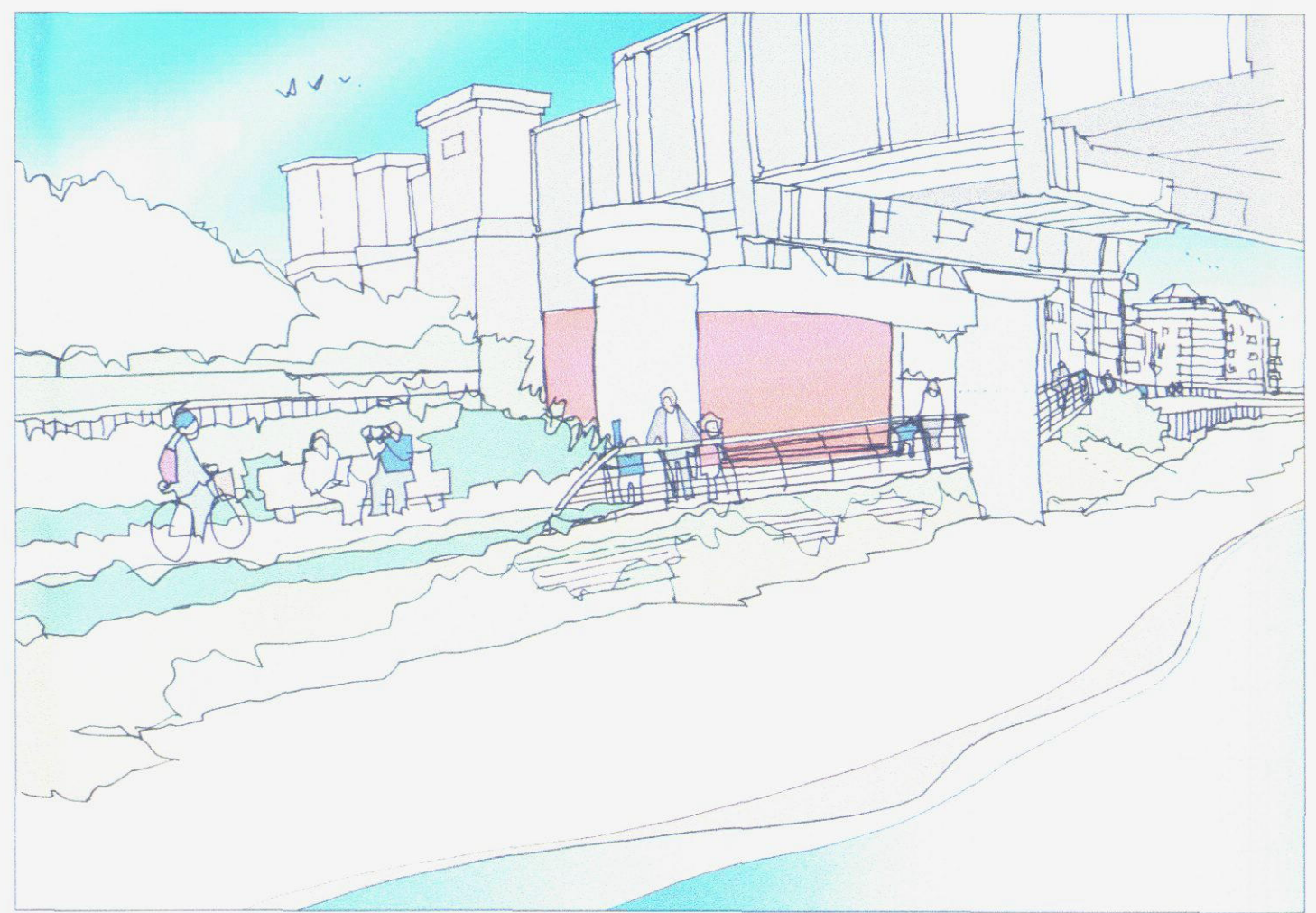
Existing photographs of river walk



Section through river edge to show new cycle/pedestrian footpath (Scale 1 : 50)



Existing photographs of railway bridge undercroft



Perspective to show improvements to railway bridge undercroft

- extended timber decking and safety guardrail
- graffiti removal/repainting
- possible 'public art' mural to brick wall

YYMMDD	By	Chk	By	Chk	Notes
					<ol style="list-style-type: none"> <li>1. Niche Architects are not responsible for the accuracy of topographical survey produced by Offington Land Surveyors</li> <li>2. Heights of adjacent buildings are based on 3D digital models by Zmapping Ltd.</li> <li>3. All areas are approximate gross internal</li> <li>4. This drawing is not for construction or Building Control submission.</li> <li>5. Unless indicated, this drawing is for information only.</li> </ol>

Keys & Legends

Scale (m) 1 : 1000

**NICHE ARCHITECTS LLP**  
 77 Great Peter Street  
 Westminster  
 London SW1P 2EZ  
 Tel: 020 7222 3232  
 Fax: 0870 420 5073  
 Email: mail@nichearchitects.co.uk

Copyright Niche Architects LLP. Company No. 0C341061. Registered in England.

Project  
**Shoreham by Sea**

Drawing Title  
 Proposed Off-site Improvements

ADUR & WORTHING PLANNING SERVICES		Project No. 0135
PLAN	AWDM/0935/13	
D	09 AUG 2013	
V		

Drawing Number	0135_OPP_22	Revision	
Scale @ A1	1 : 1000	Revision Date	YY MM DD